

Post Details		Last Updated: 15/12/25	
Faculty/Administrative/Service Department	Faculty of Engineering and Physical Sciences / Physics		
Job Title	SCM Research Laboratory Technician		
Job Family	Technical and Experimental	Job Level	3
Responsible to	Technical Manager		
Responsible for (Staff)	N/A		
<u>Job Purpose Statement</u>			
The post holder will provide technical expertise and support the Soft Condensed Matter academics, their research teams and projects (including UG and PG taught projects) within the materials research laboratories. The laboratories use such techniques as thermogravimetric analysis (TGA), differential thermal analysis (DTA), differential scanning calorimetry (DSC), high-resolution fluorescence imaging, electron microscopy, atomic force microscopy (AFM).			
<u>Key Responsibilities</u>			
<div><div></div><div><div></div><div></div><div></div><div></div><div></div><div></div><div></div><div></div><div></div><div></div><div></div><div></div><div></div><div></div><div></div><div></div><div></div><div></div><div></div><div></div><div></div><div></div><div></div><div></div><div></div><div></div><div></div><div></div><div></div><div></div><div></div><div></div><div></div><div></div><div></div><div></div><div></div><div></div><div></div><div></div><div></div><div></div><div></div><div></div><div></div><div></div><div></div><div></div><div></div><div></div><div></div><div></div><div></div><div></div><div></div><div></div><div></div><div></div><div></div><div></div><div></div><div></div><div></div><div></div><div></div><div></div><div></div><div></div><div></div><div></div><div></div><div></div><div></div><div></div><div></div><div></div><div></div><div></div><div></div><div></div><div></div><div></div><div></div><div></div><div></div><div></div><div></div><div></div><div></div><div></div><div></div><div></div><div></div><div></div><div></div><div></div><div></div><div></div><div></div><div></div><div></div><div></div><div></div><div></div><div></div><div></div><div></div><div></div><div></div><div></div><div></div><div></div><div></div><div></div><div></div><div></div><div></div><div></div><div></div><div></div><div></div><div></div><div></div><div></div><div></div><div></div><div></div><div></div><div></div><div></div><div></div><div></div><div></div><div></div><div></div><div></div><div></div><div></div><div></div><div></div><div></div><div></div><div></div><div></div><div></div><div></div><div></div><div></div><div></div><div></div><div></div><div></div><div></div><div></div><div></div><div></div><div></div><div></div><div></div><div></div><div></div><div></div><div></div><div></div><div></div><div></div><div></div><div></div><div></div><div></div><div></div><div></div><div></div><div></div><div></div><div></div><div></div><div></div><div></div><div></div><div></div><div></div><div></div><div></div><div></div><div></div><div></div><div></div><div></div><div></div><div></div><div></div><div></div><div></div><div></div><div></div><div></div><div></div><div></div><div></div><div></div><div></div><div></div><div></div><div></div><div></div><div></div><div></div><div></div><div></div><div></div><div></div><div></div><div></div><div></div><div></div><div></div><div></div><div></div><div></div><div></div><div></div><div></div><div></div><div></div><div></div><div></div><div></div><div></div><div></div><div></div><div></div><div></div><div></div><div></div><div></div><div></div><div></div><div></div><div></div><div></div><div></div><div></div><div></div><div></div><div></div><div></div><div></div><div></div><div></div><div></div><div></div><div></div><div></div><div></div><div></div><div></div><div></div><div></div><div></div><div></div><div></div><div></div><div></div><div></div><div></div><div></div><div></div><div></div><div></div><div></div><div></div><div></div><div></div><div></div><div></div><div></div><div></div><div></div><div></div><div></div><div></div><div></div><div></div><div></div><div></div><div></div><div></div><div></div><div></div><div></div><div></div><div></div><div></div><div></div><div></div><div></div><div></div><div></div><div></div><div></div><div></div><div></div><div></div><div></div><div></div><div></div><div></div><div></div><div></div><div></div><div></div><div></div><div></div><div></div><div></div><div></div><div></div><div></div><div></div><div></div><div></div><div></div><div></div><div></div><div></div><div></div><div></div><div></div><div></div><div></div><div></div><div></div><div></div><div></div><div></div><div></div><div></div><div></div><div></div><div></div><div></div><div></div><div></div><div></div><div></div><div></div><div></div><div></div><div></div><div></div><div></div><div></div><div></div><div></div><div></div><div></div><div></div><div></div><div></div><div></div><div></div><div></div><div></div><div></div><div></div><div></div><div></div><div></div><div></div><div></div><div></div><div></div><div></div><div></div><div></div><div></div><div></div><div></div><div></div><div></div><div></div><div></div><div></div><div></div><div></div><div></div><div></div><div></div><div></div><div></div><div></div><div></div><div></div><div></div><div></div><div></div><div></div><div></div><div></div><div></div><div></div><div></div><div></div><div></div><div></div><div></div><div></div><div></div><div></div><div></div><div></div><div></div><div></div><div></div><div></div><div></div><div></div><div></div><div></div><div></div><div></div><div></div><div></div><div></div><div></div><div></div><div></div><div></div><div></div><div></div><div></div><div></div><div></div><div></div><div></div><div></div><div></div><div></div><div></div><div></div><div></div><div></div><div></div><div></div><div></div><div></div><div></div><div></div><div></div><div></div><div></div><div></div><div></div><div></div><div></div><div></div><div></div><div></div><div></div><div></div><div></div><div></div><div></div><div></div><div></div><div></div><div></div><div></div><div></div><div></div><div></div><div></div><div></div><div></div><div></div><div></div><div></div><div></div><div></div><div></div><div></div><div></div><div></div><div></div><div></div><div></div><div></div><div></div><div></div><div></div><div></div><div></div><div></div><div></div><div></div><div></div><div></div><div></div><div></div><div></div><div></div><div></div><div></div><div></div><div></div><div></div><div></div><div></div><div></div><div></div><div></div><div></div><div></div><div></div><div></div><div></div><div></div><div></div><div></div><div></div><div></div><div></div><div></div><div></div><div></div><div></div><div></div><div></div><div></div><div></div><div></div><div></div><div></div><div></div><div></div><div></div><div></div><div></div><div></div><div></div><div></div><div></div><div></div><div></div><div></div><div></div><div></div><div></div><div></div><div></div><div></div><div></div><div></div><div></div><div></div><div></div><div></div><div></div><div></div><div></div><div></div><div></div><div></div><div></div><div></div><div></div><div></div><div></div><div></div><div></div><div></div><div></div><div></div><div></div><div></div><div></div><div></div><div></div><div></div><div></div><div></div><div></div><div></div><div></div><div></div><div></div><div></div><div></div><div></div><div></div><div></div><div></div><div></div><div></div><div></div><div></div><div></div><div></div><div></div><div></div><div></div><div></div><div></div><div></div><div></div><div></div><div></div><div></div><div></div><div></div><div></div><div></div><div></div><div></div><div></div><div></div><div></div><div></div><div></div><div></div><div></div><div></div><div></div><div></div><div></div><div></div><div></div><div></div><div></div><div></div><div></div><div></div><div></div><div></div><div></div><div></div><div></div><div></div><div></div><div></div><div></div><div></div><div></div><div></div><div></div><div></div><div></div><div></div><div></div><div></div><div></div><div></div><div></div><div></div><div></div><div></div><div></div><div></div><div></div><div></div><div></div><div></div><div></div><div></div><div></div><div></div><div></div><div></div><div></div><div></div><div></div><div></div><div></div><div></div><div></div><div></div><div></div><div></div><div></div><div></div><div></div><div></div><div></div><div></div><div></div><div></div><div></div><div></div><div></div><div></div><div></div><div></div><div></div><div></div><div></div><div></div><div></div><div></div><div></div><div></div><div></div><div></div><div></div><div></div><div></div><div></div><div></div><div></div><div></div><div></div><div></div><div></div><div></div><div></div><div></div><div></div><div></div><div></div><div></div><div></div><div></div><div></div><div></div><div></div><div></div><div></div><div></div><div></div><div></div><div></div><div></div><div></div><div></div><div></div><div></div><div></div><div></div><div></div><div></div><div></div><div></div><div></div><div></div><div></div><div></div><div></div><div></div><div></div><div></div><div></div><div></div><div></div><div></div><div></div><div></div><div></div><div></div><div></div><div></div><div></div><div></div><div></div><div></div><div></div><div></div><div></div><div></div><div></div><div></div><div></div><div></div><div></div><div></div><div></div><div></div><div></div><div></div><div></div><div></div><div></div><div></div><div></div><div></div><div></div><div></div><div></div><div></div><div></div><div></div><div></div><div></div><div></div><div></div><div></div><div></div><div></div><div></div><div></div><div></div><div></div><div></div><div></div><div></div><div></div><div></div><div></div><div></div><div></div><div></div><div></div><div></div><div></div><div></div><div></div><div></div><div></div><div></div><div></div><div></div><div></div><div></div><div></div><div></div><div></div><div></div><div></div><div></div><div></div><div></div><div></div><div></div><div></div><div></div><div></div><div></div><div></div><div></div><div></div><div></div><div></div><div></div><div></div><div></div><div></div><div></div><div></div><div></div><div></div><div></div><div></div><div></div><div></div><div></div><div></div><div></div><div></div><div></div><div></div><div></div><div></div><div></div><div></div><div></div><div></div><div></div><div></div><div></div><div></div><div></div><div></div><div></div><div></div><div></div><div></div><div></div><div></div><div></div><div></div><div></div><div></div><div></div><div></div><div></div><div></div><div></div><div></div><div></div><div></div><div></div><div></div><div></div><div></div><div></div><div></div><div></div><div></div><div></div><div></div><div></div><div></div><div></div><div></div><div></div><div></div><div></div><div></div><div></div><div></div><div></div><div></div><div></div><div></div><div></div><div></div><div></div><div></div><div></div><div></div><div></div><div></div><div></div><div></div><div></div><div></div><div></div><div></div><div></div><div></div><div></div><div></div><div></div><div></div><div></div><div></div><div></div><div></div><div></div><div></div><div></div><div></div><div></div><div></div><div></div><div></div><div></div><div></div><div></div><div></div><div></div><div></div><div></div><div></div><div></div><div></div><div></div><div></div><div></div><div></div><div></div><div></div><div></div><div></div><div></div><div></div><div></div><div></div><div></div><div></div><div></div><div></div><div></div><div></div><div></div><div></div><div></div><div></div><div></div><div></div><div></div><div></div><div></div><div></div><div></div><div></div><div></div><div></div><div></div><div></div><div></div><div></div><div></div><div></div><div></div><div></div><div></div><div></div><div></div><div></div><div></div><div></div><div></div><div></div><div></div><div></div><div></div><div></div><div></div><div></div><div></div></div></div>			

Planning and Organising

- The post holder will organise and prioritise their work within an established operating environment, guided by health and safety guidelines and laboratory best practices. On a day-to-day basis, the post holder will generally work with limited guidance from the Physics Laboratory Superintendent and more senior colleagues. They will have the latitude within their daily work routine to organise and prioritise their own work, to ensure that all the students can successfully complete their experimental work.
- This will include successfully managing any conflicting demands, possessing a basic awareness of the options available and being able to make effective and appropriate decisions, referring to their line manager where appropriate.

Problem Solving and Decision Making

- The post holder will be expected to apply reasonable personal initiative and judgement when faced with situations where past experience does not apply; referring only exceptionally complex or unprecedented issues to their line manager for advice or guidance.

Continuous Improvement

- The post holder is expected to take a pro-active approach to their work, making suggestions for minor improvements in working methods within areas of responsibility and implementing them under the guidance of their line manager.
- The post holder will be expected to acquire and/or refresh their skills on the analytical instrumentation for which they have responsibility. This will be achieved by a variety of means but will include attendance at specialised training courses and scientific meetings and keeping up to date with technical literature.
- The post holder is also expected to develop new technical skills as appropriate to the developing nature of research within the laboratory, to contribute to the creation of innovative solutions to requirements. It will be necessary to attend training courses as required.

Accountability

- The post holder will be required to order miscellaneous material, parts and consumables and ensure adequate stock levels at an appropriate cost. Failure to do so would affect the students' laboratory experience.
- The post holder is expected to also apply their technical knowledge and practical knowledge of the required laboratory practices to provide advice, training and assistance to staff and students regarding the application of techniques and use of common equipment for preparation and application of standard laboratory techniques. Whilst the work will usually follow an established pattern, the post holder is able to refer to well-defined procedures for guidance when required. The post holder is however, required to recognise when problem/issues should be referred to a senior member of the team or to their line manager for guidance or resolution. The post holder is expected confidently to provide advice and solutions to routine day-to-day problems in their specialist area.
- The post holder is expected to assist with the monitoring and maintaining a safe working environment within the Soft Condensed Matter laboratories and ensuring that the environment meets Health and Safety requirements and procedures such as electrical safety testing, COSHH and disposal of waste chemicals are carried out in compliance with their associated regulations. Errors in judgement or failure to carry out a particular task could result in damaging equipment or risking students and staff's personal safety.

Dimensions of the role

- This role will be based in the Soft Condensed Matter research laboratories where they will work alongside multiple academic staff. The post impacts the student and staff experience in terms of its provision of service and its contribution to learning.
- There are no direct budgetary responsibilities although the post holder will be required to order miscellaneous material, parts and consumables and ensure adequate stock levels under their own initiative.

Supplementary Information

- The post holder will be a member of the appropriate area H&S Forum.

Person Specification This section describes the sum total of knowledge, experience & competence required by the post holder that is necessary for standard acceptable performance in carrying out this role.

Qualifications and Professional Memberships

HNC/D, degree in the relevant specialist area, plus relevant work experience or broad practical work experience in a relevant technical or scientific role.

E

Technical Competencies (Experience and Knowledge) This section contains the level of competency required to carry out the role (please refer to the Competency Framework for clarification where needed and the Job Matching Guidance).

**Essential/
Desirable**

**Level
1-3**

Experience of a physics laboratory or relevant similar experience.

E

2

Ability to work with minimal supervision

E

2

Understanding of relevant Health & Safety

E

2

Experience of ordering and handling chemical and biological agents

D

1

Experience of handling cryogenics and gases

D

1

Experience of managing, working in a supervisory capacity, or in an organising role in a laboratory or suite of laboratories

D

2

Knowledge of stock control procedures

D

1

Willingness and aptitude to broaden skills to cover for colleagues in their specialist areas during periods of absence.

D

1

Special Requirements:

**Essential/
Desirable**

Candidate must be physically fit to participate in manual handling and for access to the labs.

E

Core Competencies This section contains the level of competency required to carry out this role. (Please refer to the competency framework for clarification where needed). n/a (not applicable) should be placed, where the competency is not a requirement of the grade.

**Level
1-3**

Communication

2

Adaptability / Flexibility

3

Customer/Client service and support

2

Planning and Organising

2

Continuous Improvement

2

Problem Solving and decision making Skills

2

Managing and Developing Performance

N/A

Creative and Analytical Thinking

2

Influencing, Persuasion and Negotiation Skills

1

Strategic Thinking & Leadership

N/A

Organisational/Departmental Information & Key Relationships

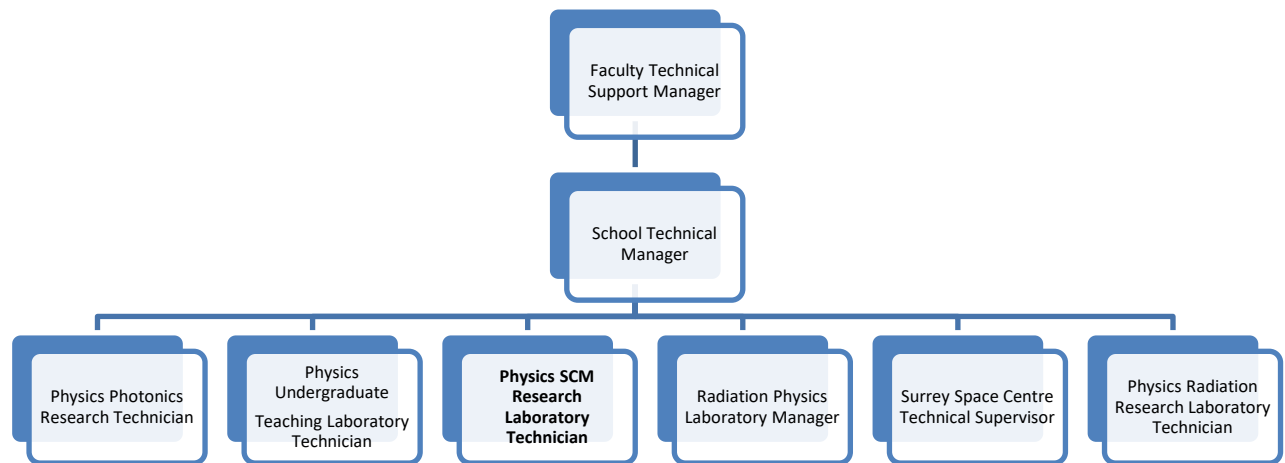
Background Information

The Faculty of Engineering and Physical Sciences is built on the core engineering disciplines of Chemical Engineering Aeronautical Engineering, Civil Engineering, Electronic Engineering and Mechanical Engineering, together with the core scientific disciplines of Computing, Mathematics Physics and Chemistry. Within these fields we enjoy a reputation for excellence in research and teaching.

The post holder will be working as part of team supporting approximately 25 academic and research staff and associated postgraduate and undergraduate students. It is a highly interdisciplinary field, and a lot of our research is conducted in collaboration with chemists, biologists, engineers, or vets. Both experimental and computational research, is carried out, as well as pure science and work with industrial collaborators.

This commitment may include helping with Level M Individual Projects and MSc Individual Research Projects.

School Structure Chart



Relationships

Internal

- The post holder will assist staff and students (UG +PG) in design and manufacture of apparatus for both teaching and research.
- The post holder will communicate with other employees of the University.

External

- The post holder will liaise with external contractors and suppliers for the provision and price of services and goods.